

[R U M]
CURATED LIVING

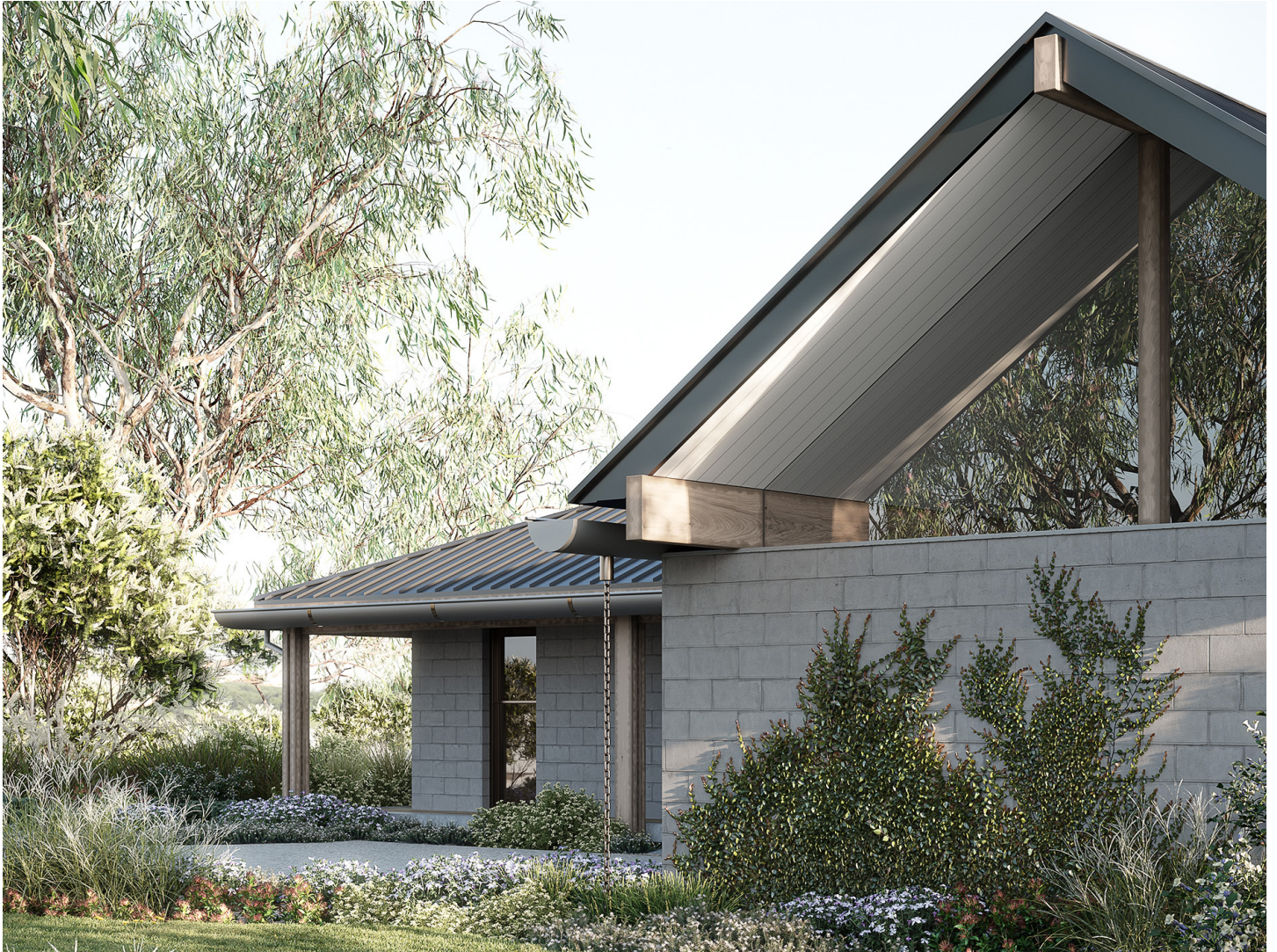
VERANDA HOUSE
BY ARCHITECTS EAT



“Verandas have been a feature of houses in every part of the world, culture and climate - they encourage extended living and connection to the outdoors. The Veranda House is an example of timeless design and seamless interaction with nature.”

[R U M]
CURATED LIVING

VERANDA HOUSE
BY ARCHITECTS EAT



VERANDA HOUSE

Bed	3
Bath	2
Powder	1
Study	1
Flexible	2
Parking	2

AREA:	
Living	290m ²
Garage	43m ²
Outdoor	148m ²

TOTAL AREA: 481m²

HOUSE DIMENSIONS: 38.1m x 19.1m

[R U M]
CURATED LIVING

VERANDA HOUSE
BY ARCHITECTS EAT



[R U M]

CURATED LIVING

VERANDA HOUSE
BY ARCHITECTS EAT



“The Veranda House creates an atmosphere where one feels free to relax and exhale. It is this sort of simplicity that is the most complex to achieve.”

Verandas have been a feature of houses in every part of the world, culture and climate - they encourage extended living and connection to the outdoors.

The Veranda House is an example of timeless design and seamless interaction with nature. Large slanted roofs cover the decked pathways that connect the various rooms. The deep eaves and deeper running-board penetrate the garden, unifying the rooms inside with the spaces outside. This evokes a relaxed atmosphere that is unmistakably rural, yet unquestionably modern.

Light-coloured timber species, including ash, cedar and cypress, produce a subtle variety of surfaces. Indirect light, streaming through the sheltered glass doors, adds another layer of understated calm. All rooms in the house are decidedly human in scale, there is nothing that is pretentious or showy. The little external courtyard creates views from one part of the house into another, rendering different layers of transparency and creating a sense of spaciousness in the house.

The Veranda House creates an atmosphere where one feels free to relax and exhale. It is this sort of simplicity that is the most complex to achieve.



Ruum Escape Collection team, L-R: Andy Wong, Albert Mo, Glen Chamberlain, Fiona Dunin, Elliot McLaren, Tom Robertson

“Ruum sets a benchmark for collaboration, we curate and work with top tier architects and builders known for their craftsmanship. The Ruum model is based on all three teams working closely together from the outset to form a stable platform, ensuring a holistic approach to the design, build and delivery of your architect designed home.”

Ruum

With over thirty years of combined experience in the housing industry, our insight into the market led us to rethink and reassess the traditional pathway to architect designed living. We believe everyone deserves access to good design and present an alternative for those who value premium architecture and progressive and flexible design. Ruum commissions signature collections from leading architects, then oversees all stages of this journey on your behalf. Working alongside leading residential architects and selected builders, we eliminate the unknowns of a new build with transparency and trust.

Selected Ruum Builders

We have built relationships with a select suite of builders who have the skills, quality and resources to deliver our Ruum house designs to a premium architectural standard. We have found that carefully pairing the right builders in the right locations ensures the most competitive prices for our clients. These builders understand the Ruum model and this ongoing relationship leads to greater knowledge sharing, useful insights and feedback which, in turn, ensures constantly refined craftsmanship and build quality.

Ruum Escape Collection

In direct response to the market, Ruum has created a new series of homes known as the 'Escape Collection'. The new collection has been created by five leading residential architecture studios, each contributing a house design inspired by the idea of 'escape'. Chamberlain Architects have again returned to design one of the residences, and this time are joined by Andy Wong, Architects EAT, FMD Architects and Tom Robertson Architects.

All designs have been centred around the concept of 'escape', a direct response to the movement of people favouring weekend getaways and an increased demand to live and work remotely on rural or coastal sites.

Architects EAT

Architects EAT are passionate about tactile qualities in architecture and how different qualities of natural light affect the way we live. They also concern themselves with the idea of a house being a mechanism for living and how sustainable this mechanism can be.

In Director, Albert Mo's words, "The innovative Ruum model supports limited iterations of a design while ensuring the quality of the design. This means that our level of design thinking can be broadcast to a wider audience, enjoyed by many more people and multiplied at a greater rate."