

[ R U M ]  
CURATED LIVING

HORIZON HOUSE  
BY CHAMBERLAIN ARCHITECTS



“Horizon house offers a flexible and adaptable design that can work on a number of different site topographies, from flat to steeply sloping, this house will adapt from single to double story depending on the opportunities presented by the site. With the ability to be configured as a reverse living design, this house can be elevated to maximise views.”



[ R U M ]  
CURATED LIVING

HORIZON HOUSE  
BY CHAMBERLAIN ARCHITECTS







## HORIZON HOUSE

Bed	3
Bath	2
Powder	1
Study	1
Parking	optional

### AREA:

Living	210.2m <sup>2</sup>
Outdoor	61.3 m <sup>2</sup>

<b>TOTAL AREA:</b>	<b>271.5m<sup>2</sup></b>
--------------------	---------------------------

<b>HOUSE DIMENSIONS:</b>	<b>12.5m x 35.5m</b>
--------------------------	----------------------

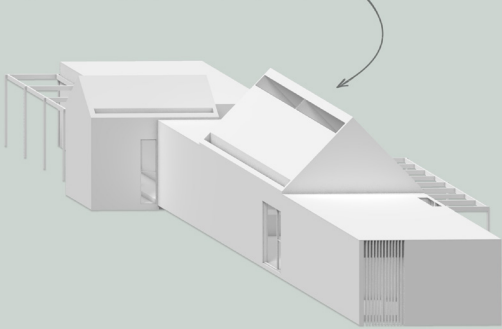
During the long lock-downs over the last two years, Glen Chamberlain, Director of Chamberlain Architects, dreamt of escaping to an idyllic bush block at the foothills of the high country. He often found himself sketching ideas to articulate these dreams and the core of the Horizon House came from these sketches. The team at Chamberlain imagined the block on a sloping site and were intrigued with how a simple holiday house could be developed for such conditions. They wanted simple forms, with soaring ceilings and a modest yet robust material palette. A relaxed and easy place to 'get away'.

When approached by Ruum with the idea of the Escape Collection, Chamberlain Architects started thinking about how the Horizon House might adapt to different sites, locations and topography. They considered this house as a collection of modules, that could be mixed and matched, according to the site conditions. This approach also recalls the tradition of a house expanding over time, as the family expands. A module can simply be added on some years after the original house is finished, to encompass lifestyles changes.

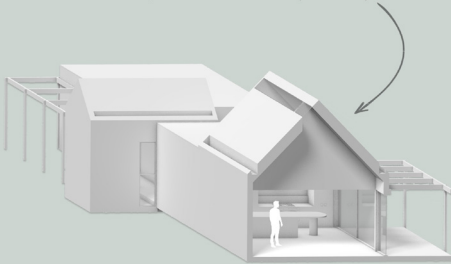
The Horizon House is a simple pavilion with sculptural gable forms highlighting key points in the plan. The smaller gable defines the entry and the larger gable soars over the main living room with a dramatic skylight positioned to capture sunlight regardless of the orientation. The base floor plan is reflective of their initial sketches and is a compact three bedroom dwelling with a large deck, taking in a view or a stunning northern aspect.



FEATURE SKYLIGHT TO CAPTURE  
THE SUN FROM ANY DIRECTION



CEILING PARTITION TO DEFINE  
SPACES IN A SUBTLE WAY



### Dramatic skylight feature:

The Horizon House is a simple pavilion with sculptural gable form highlighting key points in the plan. The smaller gable defines the entry and the larger gable soars over the main living room with a dramatic skylight positioned to maximise sunlight, regardless of the orientation. Look up and you will see the clouds floating past or the stars twinkling in the night sky.

### Ceiling partition to delineate spaces:

The main kitchen and living space is contained within the large feature gable. To avoid this space becoming cavernous and to enhance a sense of cosiness, Chamberlain Architects have introduced a feature ceiling partition through the main gable. This partition creates spatial definition between the kitchen and the living area in a subtle way, while allowing the floorspace to remain open and flexible.

This house is perfect for singles, young families or couples who don't have the need for additional bedrooms and living spaces. Alternatively, such spaces are easily added to in a considered way, with the addition of one of the three modules designed to accommodate extra bedrooms, living areas and even garages. The addition of these modules allows the Horizon House to be considered as a primary family home.





Ruum Escape Collection team, L-R: Andy Wong, Albert Mo, Glen Chamberlain, Fiona Dunin, Elliot McLaren, Tom Robertson

“Ruum sets a benchmark for collaboration, we curate and work with top tier architects and builders known for their craftsmanship. The Ruum model is based on all three teams working closely together from the outset to form a stable platform, ensuring a holistic approach to the design, build and delivery of your architect designed home.”

## Ruum

With over thirty years of combined experience in the housing industry, our insight into the market led us to rethink and reassess the traditional pathway to architect designed living. We believe everyone deserves access to good design and present an alternative for those who value premium architecture and progressive and flexible design. Ruum commissions signature collections from leading architects, then oversees all stages of this journey on your behalf. Working alongside leading residential architects and builders, Spence Construction, we eliminate the unknowns of a new build with transparency and trust.

## Selected Ruum Builders

We have built relationships with a select suite of builders who have the skills, quality and resources to deliver our Ruum house designs to a premium architectural standard. We have found that carefully pairing the right builders in the right locations ensures the most competitive prices for our clients. These builders understand the Ruum model and this ongoing relationship leads to greater knowledge sharing, useful insights and feedback which, in turn, ensures constantly refined craftsmanship and build quality.

## Ruum Escape Collection

In direct response to the market, Ruum has created a new series of homes known as the ‘Escape Collection’. The new collection has been created by five leading residential architecture studios, each contributing a house design inspired by the idea of ‘escape’. Chamberlain Architects have again returned to design one of the residences, and this time are joined by Andy Wong, Architects EAT, FMD Architects and Tom Robertson Architects.

All designs have been centred around the concept of ‘escape’, a direct response to the movement of people favouring weekend getaways and an increased demand to live and work remotely on rural or coastal sites.

## Chamberlain Architects

Intrigued by humble daily rituals, Chamberlain Architects specialise in designing residences that enrich daily life. With over fifteen years of experience in residential architecture and an extensive collection of built and published projects, their thoughtful use of space and volume can, at its simplest, bring a sense of ease to daily living, or heighten drama and excitement. They use architecture as a means to enhance the human experience and intuitive living, while always seeking new ways to bring unexpected moments of joy and delight to design.